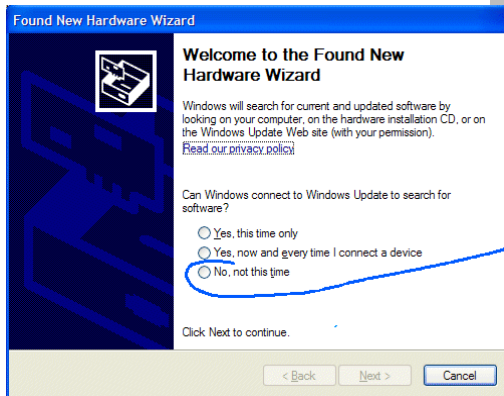


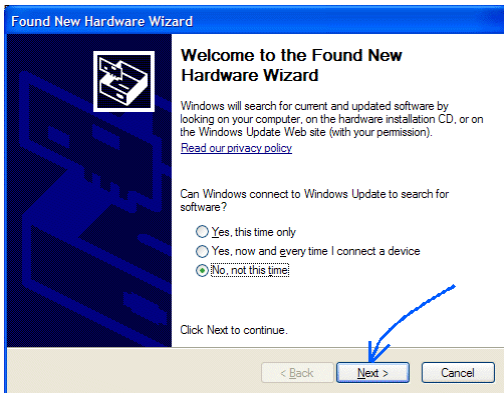
Windows XP driver installation

When you first plug in the LocoBuffer-USB it should pop up a little balloon that says something like "Found new hardware LocoBuffer-USB."



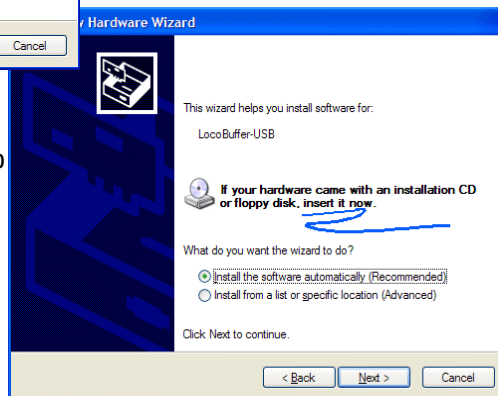
In a few seconds a "Found New Hardware Wizard" window opens up. To automatically install the drivers be sure that you are connected to the Internet, then select "Yes".

To manually install from a CD check the little circle that says "No, not this time."



The "Next" button becomes active. Click "Next".

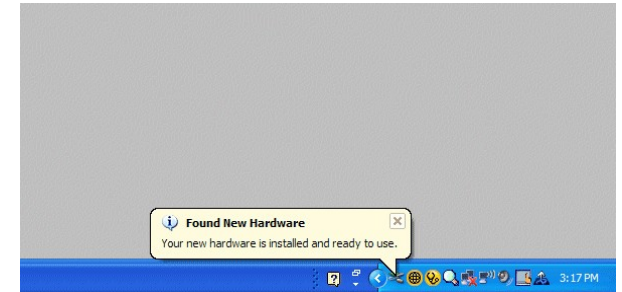
If you choose to manual install from a file or CD, then a window opens up that asks you to install the driver CD or select the folder location. That is all you need to do. Once you insert the driver CD it automatically finds the correct files and goes on to the next window without the need for you to check any boxes, make any further selections, nor to click any buttons.



It should then continue automatically to the point where it says "Completing the Found New Hardware Wizard" and you can click on "Finish"

As soon as you click "Finish" the computer acts like it hasn't paid any attention to what it just did, so you have to do it all over again. Of course this time the CD is already in the drive, or the folder is selected, so you just click "Next" at that point. It will soon proceed a second time to the final screen where you can again click "Finish".

At this point you should have the driver installed such that Windows will remember it.



If you unplug the LocoBuffer-USB, Windows should make a "bink-bonk" sound. If you plug it in again it should make a "bonk-bink" sound, but not ask you to install the drivers again, even if you use a different USB port.

Once you have installed the Windows drivers and have your LocoBuffer-USB connected, then you can start up your software. Your software will not load properly until the drivers are installed and the LocoBuffer-USB is connected.

For more information you may go into the Windows control panel system information area, (Start - Control Panel - System) then click on the Hardware tab and select Device Manager. Open up the Ports section and check that the LocoBuffer-USB shows up as an option. If it is not there, it didn't install correctly. The COM number that is shown with the LocoBuffer-USB entry is the one to use with your software when you set its preferences.